

BOCA RIO BEACH CONDOMINIUM

MAP NO 8237 SHEET 7 OF 2 SHEETS

WE HEREBY CERTIFY THAT WE ARE THE OWNERS OF OR ARE INTERESTED IN THE LAND AND HEREBY CONSENT TO THE SUBDIVISION AND RECORDATION OF THIS MAP, CONSISTING OF 2 SHEETS AND DESCRIBED IN THE CAPTION THEREOF. WE HEREBY REQUEST TO BE ADDED TO THE LIST OF OWNERS OF THIS MAP WITH THIS SUBDIVISION.

STATE OF CALIFORNIA
COUNTY OF SAN DIEGO
SHERIFF INVESTORS, A LIMITED PARTNERSHIP, AS OWNER BY GENERAL PARTNER.

SHERIFF INVESTORS, A LIMITED PARTNERSHIP, AS OWNER BY GENERAL PARTNER.
BY: [Signature]

STATE OF CALIFORNIA
COUNTY OF SAN DIEGO
SHERIFF INVESTORS, A LIMITED PARTNERSHIP, AS OWNER BY GENERAL PARTNER.

STATE OF CALIFORNIA
COUNTY OF SAN DIEGO
SHERIFF INVESTORS, A LIMITED PARTNERSHIP, AS OWNER BY GENERAL PARTNER.

STATE OF CALIFORNIA
COUNTY OF SAN DIEGO
SHERIFF INVESTORS, A LIMITED PARTNERSHIP, AS OWNER BY GENERAL PARTNER.

STATE OF CALIFORNIA
COUNTY OF SAN DIEGO
SHERIFF INVESTORS, A LIMITED PARTNERSHIP, AS OWNER BY GENERAL PARTNER.

STATE OF CALIFORNIA
COUNTY OF SAN DIEGO
SHERIFF INVESTORS, A LIMITED PARTNERSHIP, AS OWNER BY GENERAL PARTNER.

STATE OF CALIFORNIA
COUNTY OF SAN DIEGO
SHERIFF INVESTORS, A LIMITED PARTNERSHIP, AS OWNER BY GENERAL PARTNER.

STATE OF CALIFORNIA
COUNTY OF SAN DIEGO
SHERIFF INVESTORS, A LIMITED PARTNERSHIP, AS OWNER BY GENERAL PARTNER.

STATE OF CALIFORNIA
COUNTY OF SAN DIEGO
SHERIFF INVESTORS, A LIMITED PARTNERSHIP, AS OWNER BY GENERAL PARTNER.

STATE OF CALIFORNIA
COUNTY OF SAN DIEGO
SHERIFF INVESTORS, A LIMITED PARTNERSHIP, AS OWNER BY GENERAL PARTNER.

STATE OF CALIFORNIA
COUNTY OF SAN DIEGO
SHERIFF INVESTORS, A LIMITED PARTNERSHIP, AS OWNER BY GENERAL PARTNER.

STATE OF CALIFORNIA
COUNTY OF SAN DIEGO
SHERIFF INVESTORS, A LIMITED PARTNERSHIP, AS OWNER BY GENERAL PARTNER.

STATE OF CALIFORNIA
COUNTY OF SAN DIEGO
SHERIFF INVESTORS, A LIMITED PARTNERSHIP, AS OWNER BY GENERAL PARTNER.

STATE OF CALIFORNIA
COUNTY OF SAN DIEGO
SHERIFF INVESTORS, A LIMITED PARTNERSHIP, AS OWNER BY GENERAL PARTNER.

STATE OF CALIFORNIA
COUNTY OF SAN DIEGO
SHERIFF INVESTORS, A LIMITED PARTNERSHIP, AS OWNER BY GENERAL PARTNER.

STATE OF CALIFORNIA
COUNTY OF SAN DIEGO
SHERIFF INVESTORS, A LIMITED PARTNERSHIP, AS OWNER BY GENERAL PARTNER.

STATE OF CALIFORNIA
COUNTY OF SAN DIEGO
SHERIFF INVESTORS, A LIMITED PARTNERSHIP, AS OWNER BY GENERAL PARTNER.

STATE OF CALIFORNIA
COUNTY OF SAN DIEGO
SHERIFF INVESTORS, A LIMITED PARTNERSHIP, AS OWNER BY GENERAL PARTNER.

STATE OF CALIFORNIA
COUNTY OF SAN DIEGO
SHERIFF INVESTORS, A LIMITED PARTNERSHIP, AS OWNER BY GENERAL PARTNER.

STATE OF CALIFORNIA
COUNTY OF SAN DIEGO
SHERIFF INVESTORS, A LIMITED PARTNERSHIP, AS OWNER BY GENERAL PARTNER.

STATE OF CALIFORNIA
COUNTY OF SAN DIEGO
SHERIFF INVESTORS, A LIMITED PARTNERSHIP, AS OWNER BY GENERAL PARTNER.

STATE OF CALIFORNIA
COUNTY OF SAN DIEGO
SHERIFF INVESTORS, A LIMITED PARTNERSHIP, AS OWNER BY GENERAL PARTNER.

STATE OF CALIFORNIA
COUNTY OF SAN DIEGO
SHERIFF INVESTORS, A LIMITED PARTNERSHIP, AS OWNER BY GENERAL PARTNER.

STATE OF CALIFORNIA
COUNTY OF SAN DIEGO
SHERIFF INVESTORS, A LIMITED PARTNERSHIP, AS OWNER BY GENERAL PARTNER.

STATE OF CALIFORNIA
COUNTY OF SAN DIEGO
SHERIFF INVESTORS, A LIMITED PARTNERSHIP, AS OWNER BY GENERAL PARTNER.

STATE OF CALIFORNIA
COUNTY OF SAN DIEGO
SHERIFF INVESTORS, A LIMITED PARTNERSHIP, AS OWNER BY GENERAL PARTNER.

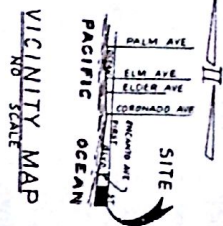
STATE OF CALIFORNIA
COUNTY OF SAN DIEGO
SHERIFF INVESTORS, A LIMITED PARTNERSHIP, AS OWNER BY GENERAL PARTNER.

STATE OF CALIFORNIA
COUNTY OF SAN DIEGO
SHERIFF INVESTORS, A LIMITED PARTNERSHIP, AS OWNER BY GENERAL PARTNER.

MAP NO. 8237

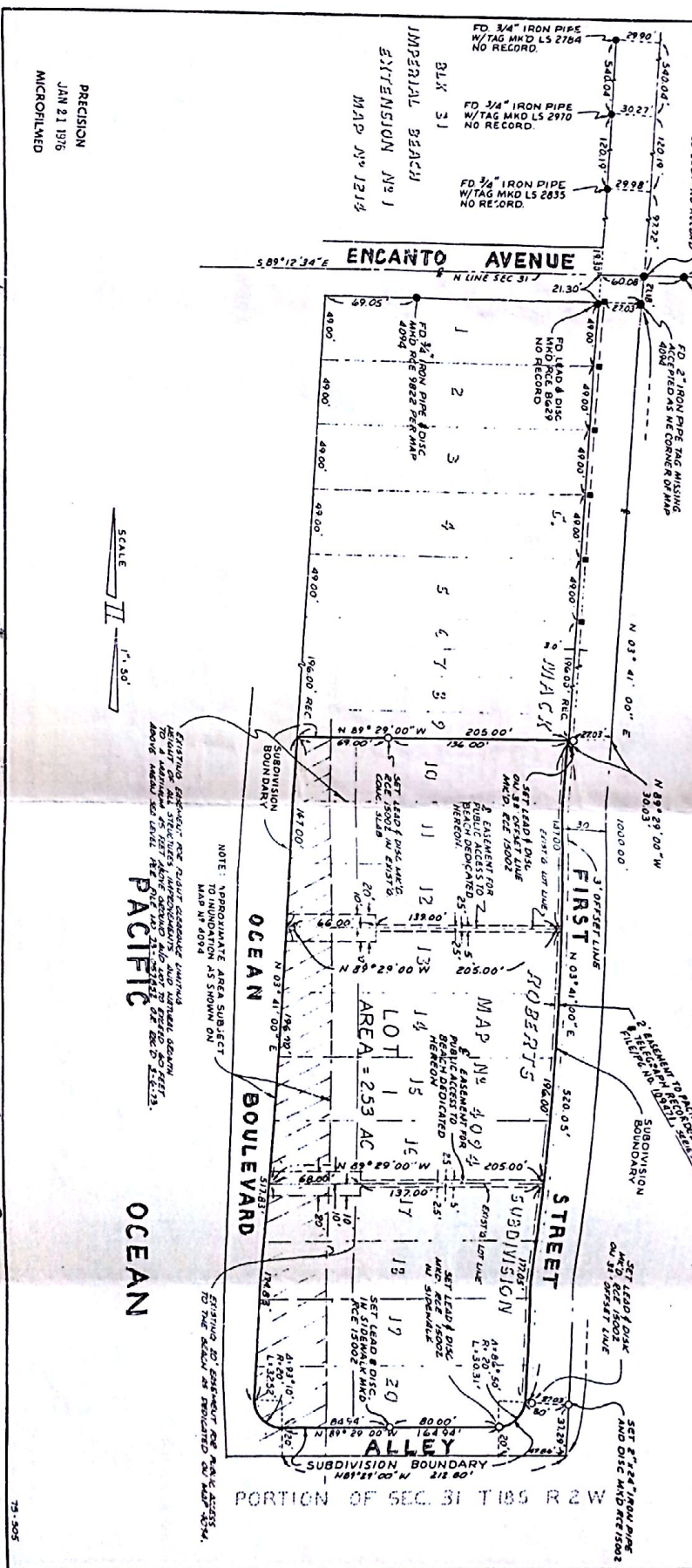
SHEET 2 OF 2 SHEETS

BOCA RIO BEACH CONDOMINIUM



- LEGEND**
- INDICATES FOUND MONUMENTS AS NOTED
 - INDICATES FOUND LEAD & DISC ON 3" FOOT OFFSET MKD REC PER MAP 4094
 - INDICATES SET MONUMENT AS NOTED
 - ▣ APPROXIMATE AREA SUBJECT TO INUNDATION FROM HIGHEST TIDE AS SHOWN ON MAP NO. 4094, (REV. BY THE BOARD AS 4/79)

THE BASIS OF BEARINGS FOR THIS MAP IS A PORTION OF THE SOUTHERLY LINE OF IMPERIAL BEACH EXTENSION NO. 1 MAP NO. 1214 AS SHOWN ON RECORD OF SURVEY NO. 2568 LG 589°12'34"E.



PRECISION
JAN 21 1976
MICROFILMED



EXISTING STRUCTURES OR OTHER OBSTACLES WHICH HINDER THE CONSTRUCTION OF THE CONDOMINIUM SHALL REMAIN AS THEY ARE AND NOT TO BE REMOVED WITHOUT THE WRITTEN CONSENT OF THE BOARD OF DIRECTORS.

NOTE: APPROXIMATE AREA SUBJECT TO INUNDATION AS SHOWN ON MAP NO. 4094.

EXISTING 20' EASEMENT FOR PUBLIC ACCESS TO THE BEACH AS SHOWN ON MAP NO. 4094.

SHT. 2 OF 2